

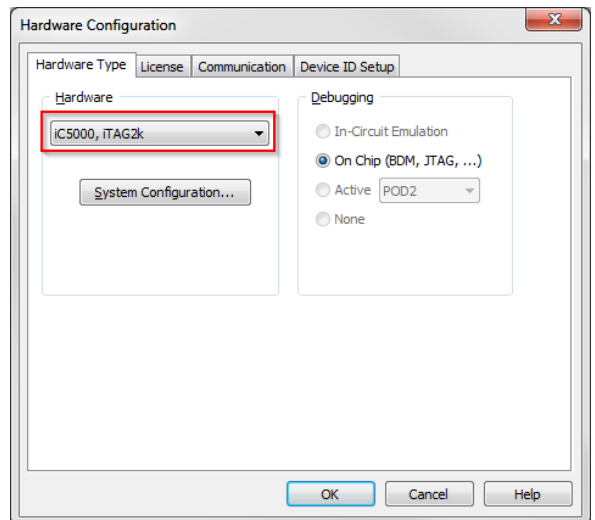


Licensing iSYSTEM Tools

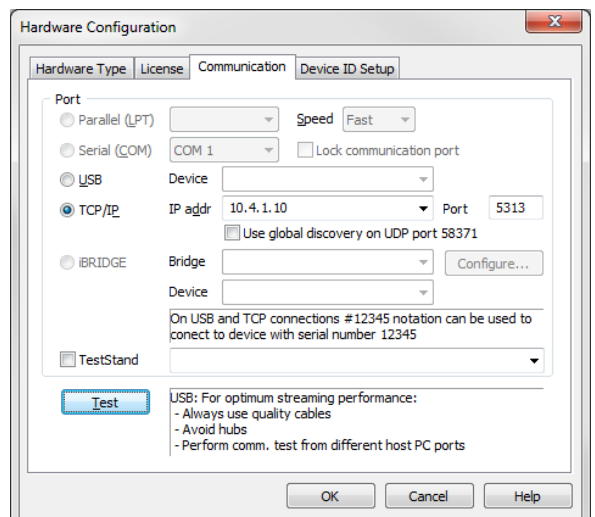
Every development hardware from iSYSTEM is working for **30 days (in a so called evaluation period) from the first time of use**. The winIDEA license or specific functionality (debug, trace, multicore, etc.) is licensed via an INIT string, which must be requested from iSYSTEM and is then programmed into the development hardware (iC3000, iC5x00, iC6000, iTAG...). This conveniently allows moving the development hardware from one PC to another as long as the winIDEA version supported by the license is installed on the PC.

INIT String Request Instructions

- Install winIDEA (see instruction at the last page of this form)
- Open winIDEA, install Examples through Help / Install Examples and open one of our demo workspaces from the Examples directory under winIDEA installation directory.
- Next open **Hardware Configuration** dialog from the 'Hardware/Hardware' menu and make sure that your development hardware type is selected.



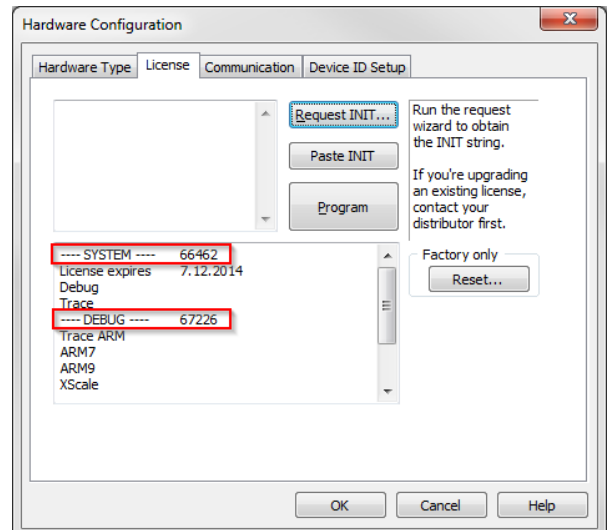
- Select the **Communication** tab, configure your specific communication and press the Test button in order to confirm that you have a working communication with the development hardware.



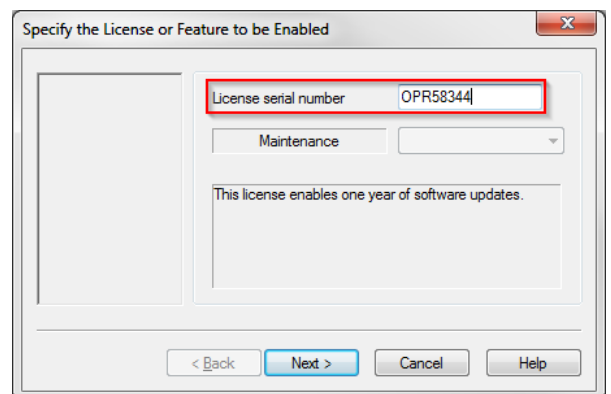
- Choose the **License** tab. The serial number of your hardware and the 'IDENT' key are displayed.

Base Unit (iC3000/iC5x00, ...) serial number is displayed to the right of the '---- SYSTEM ----' text.

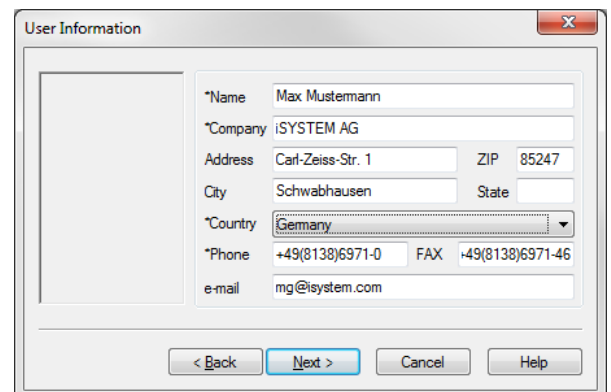
iC3000 iCARD or iC5x00/iC6000 DTM serial number is displayed to the right of the '---- DEBUG ----' text.



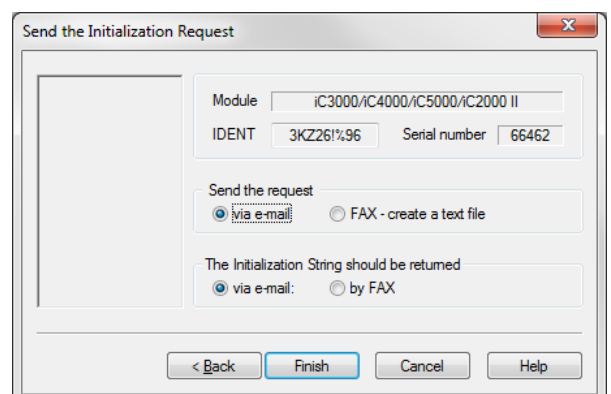
- Press the **Request INIT...** button.
- Type in the Software License Serial number provided in the winIDEA Software License(s) envelope, which you have received along with other items of your purchase. Press **Next**.



- Complete the registration data and press **Next**.

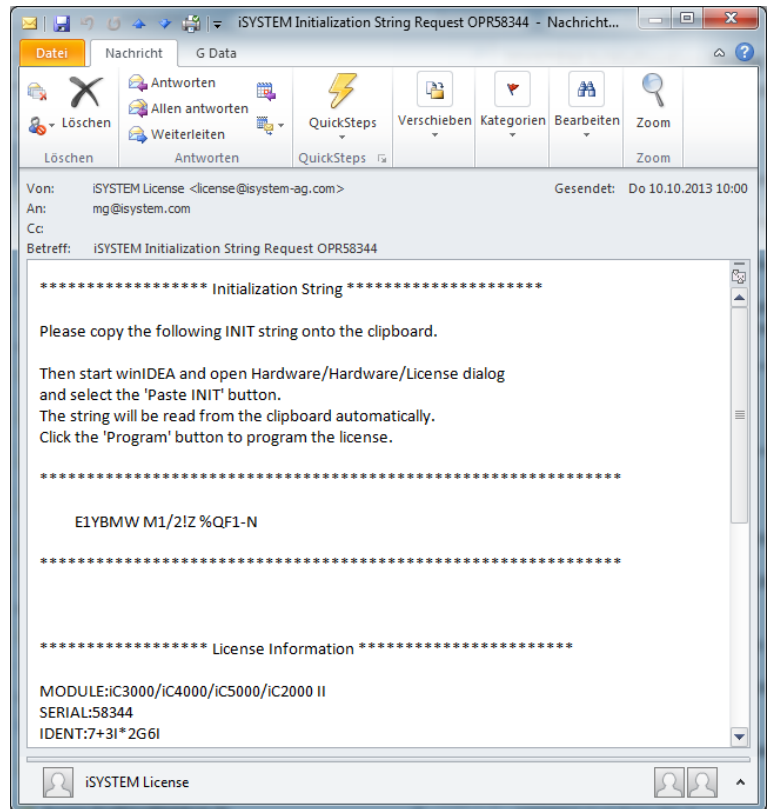


- Verify the method of sending and receiving the INIT string request and press **Finish**.
- If you selected an e-mail as a method of the delivery, the wizard will automatically create the email in your e-mail outbox and attach a file containing the INIT string request.



If you have problems sending out the request within winIDEA by email, select **FAX – create a text file** as a method of delivery and send the generated file **LICENSE.ILR** in a separate email to license@isystem.com

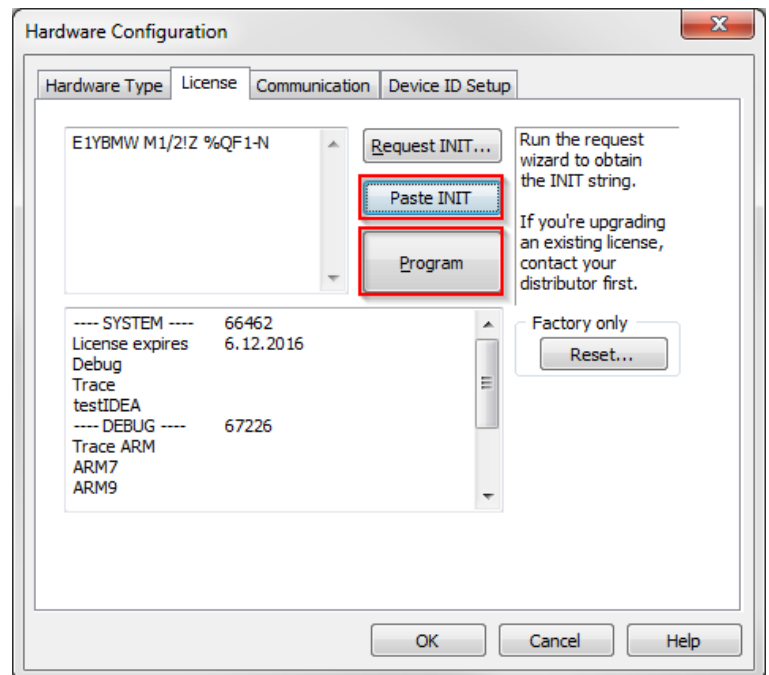
- We send you an email, normally the next working day, containing the INIT string and registration information. Copy the INIT string to the Windows Clipboard.



- Start winIDEA again with the hardware attached and turned on. Open the License tab via the 'Hardware/License' menu. Press the 'Paste INIT' button.

The INIT string is automatically pasted from the clipboard into the dialog box. Press the **Program** button and then confirm with **Yes**.

A message appears after the license was programmed successfully. The License tab now displays the programmed license information.



Note: If the development hardware requires more licenses to install, the steps above are required for each license.

winIDEA Installation Guide

Supported Operating Systems:

- Windows 10 / 8 / 7 / Vista (32- and 64-bit version)

Recommended system configuration (for optimal Analyzer performance):

- 4-8 core CPU
- 12GB or more RAM (4GB minimum)
- 100GB free space on the TEMP drive. The drive should be defragmented.
- 64-bit operating system

Note that a less capable system will also work fine for basic on-chip debugging while trace, profiler and coverage will yield shorter session times and slower general performance (depending on the specific target microcontroller and the frequency at which it operates).

Please follow the steps below for installation:

1. Make sure that you have administrator rights for the installation.
2. Either insert winIDEA DVD or download the latest verified build of winIDEA from www.isystem.com. If you are using a 64-bit operating system install the 64-bit version of winIDEA for optimal performance.
3. Perform a full installation by running the installer. Silent install is possible by using the following command line switches:

```
winIDEA9_12_256.exe /q APPDIR=c:\apps\winIDEA
```

where APPDIR determines the installation path. Full installation will install winIDEA and the USB drivers necessary to use iSYSTEM hardware. Application Programming Interfaces (APIs) are not included in the installation and must be installed separately if needed.

4. To install winIDEA API download the appropriate installer from <http://www.isystem.com/index.php/download/winidea-testidea-apis> or <http://www.isystem.com/index.php/support/winidea-archive> and run the installer. API version must match the version of winIDEA.

Uninstalling winIDEA:

1. Make sure that you have administrator rights for the uninstallation.
2. Open **Control Panel / Programs and Features** and select winIDEA version you wish to uninstall. Hit the **Uninstall/Change** button.

Installing a newer version of winIDEA (older winIDEA still present on the system):

1. Make sure that you have administrator rights for the installation.
2. If old version of winIDEA is no longer needed, uninstall it before starting the installation of newer winIDEA. Your winIDEA workspaces will not be deleted.

3. Follow the installation instructions to install the newer version of winIDEA. If older version of winIDEA is still needed, choose a different folder to install the newer winIDEA. It is possible to use multiple winIDEA versions side by side.

If you have any questions or problems with the installation or licensing, please don't hesitate to contact your local iSYSTEM distributor for technical support.

Thank you!